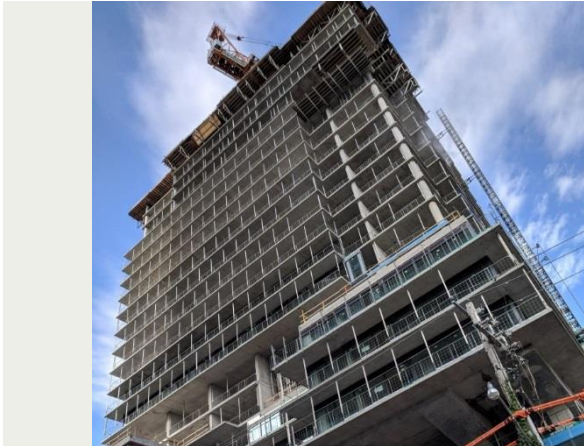


 **PROJECT PROFILES**



150 REDPATH CONDOS

TORONTO, ON

Client: Capital Developments

Size/Area: 429,500 square feet (39,902 square metres)

Cost: \$n/a

Modern and sleek, 150 Redpath Condos is sister to 155 Redpath Condos, located in the trendy Yonge and Eglinton area of mid-town Toronto.

HVAC systems consist of a dual temperature two-pipe system - hot water heating plant and chilled water plant, glycol heating systems, pool heating system, domestic hot water plant, domestic cold water booster system, air handling units, fan coil units, VRF split AC system, supply and exhaust fans and miscellaneous heating equipment. The building has both DDC control for major equipment and systems and local equipment control.

SERVICES PROVIDED BY CFMS:

- Contract document review
- Preparation of the Commissioning Plan
- Commissioning coordination
- Installation review from a commissioning prospective
- Witnessing dynamic contractor tests
- Verification of DDC system and BAS
- 100% performance testing of major HVAC systems
- 20% performance testing of terminal HVAC units
- Co-ordination of mechanical & electrical equipment and systems training
- Development of systems design & operation manual
- Seasonal performance testing of HVAC systems.

REFERENCE:

Capital Developments

Mr. Shane Murphy, Director Construction, 647.344.9315

